



POPULAR PARTS AND ACCESSORIES

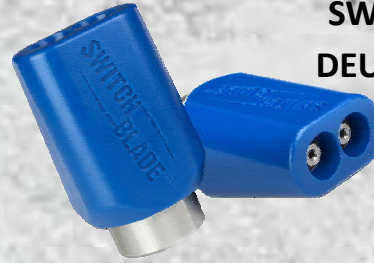
SWITCHBLADE ACE NOZZLES



1000 PSI Min.
3200 PSI Max

½" FNPT, # 8.0 Kit, up to 7.2 GPM	A255203-7.2
½" FNPT, # 10.0 Kit, up to 8.9 GPM	A255203-8.9
½" FNPT, # 12.0 Kit, up to 10.7 GPM	A255203-10.7

SWITCHBLADE DEUCE NOZZLES



1000 PSI Min.
3200 PSI Max

½" FNPT, # 8.0 Kit, up to 7.2 GPM	A255202-7.2
½" FNPT, # 10.0 Kit, up to 8.9 GPM	A255202-8.9
½" FNPT, # 12.0 Kit, up to 10.7 GPM	A255202-10.7

SWITCHBLADE QUAD NOZZLES



1000 PSI Min.
3200 PSI Max

½" FNPT, # 8.0 Kit, up to 7.2 GPM	A255201-7.2
½" FNPT, # 10.0 Kit, up to 8.9 GPM	A255201-8.9
½" FNPT, # 12.0 Kit, up to 10.7 GPM	A255201-10.7
½" FNPT, # 14.0 Kit, up to 12.5 GPM	A255201-12.5

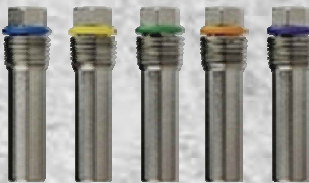
MACHETE OSCILLATING NOZZLES (15° DELTA PATTERN)



1000 PSI Min.
3200 PSI Max

½" FNPT, Size 6.0, up to 5.4 GPM	A255204-5.4
½" FNPT, Size 8.0, up to 7.2 GPM	A255204-7.2
½" FNPT, Size 10.0, up to 8.9 GPM	A255204-8.9

REPLACEMENT NOZZLE PILLS FOR SWITCHBLADE NOZZLES



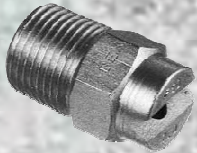
1.0 Blue, .5 GPM @ 1000 PSI	A255201-1
2.0 Yellow, 1 GPM @ 1000 PSI	A255201-2
3.0 Green, 1.5 GPM @ 1000 PSI	A255201-3
4.0 Orange, 2 GPM @ 1000 PSI	A255201-4
5.0 Purple, 2.5 GPM @ 1000 PSI	A255201-5

RIPSAW ROTATING NOZZLES (18° CONE PATTERN)



1000 PSI Min.
3200 PSI Max

½" FNPT, # 3.0, up to 2.7 GPM	A255200-3
½" FNPT, # 4.0, up to 3.6 GPM	A255200-4
½" FNPT, # 5.0, up to 4.5 GPM	A255200-5
½" FNPT, # 6.0, up to 5.4 GPM	A255200-6
½" FNPT, # 8.0, up to 7.2 GPM	A255200-8
½" FNPT, # 10.0, up to 8.9 GPM	A255200-10
½" FNPT, # 12.0, up to 10.7 GPM	A255200-12



1/4" MNPT SPRAY ORIFICES

#30 - Solid Stream Pattern	A249490
#30 - 15° Delta Pattern	A249489-2
#30 - 50° Delta Pattern	A249489-1
#30 - 95° Delta Pattern	A249489

Flow rate for a #30 (.129") orifice is about 23.7 GPM @ 2500 PSI.

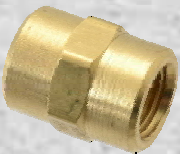
1/4" QC SPRAY ORIFICES



1/4" NPT ORIFICE ADAPTER

A255103

For 1/2" NPT Lances, 15K PSI	A255103
------------------------------	---------

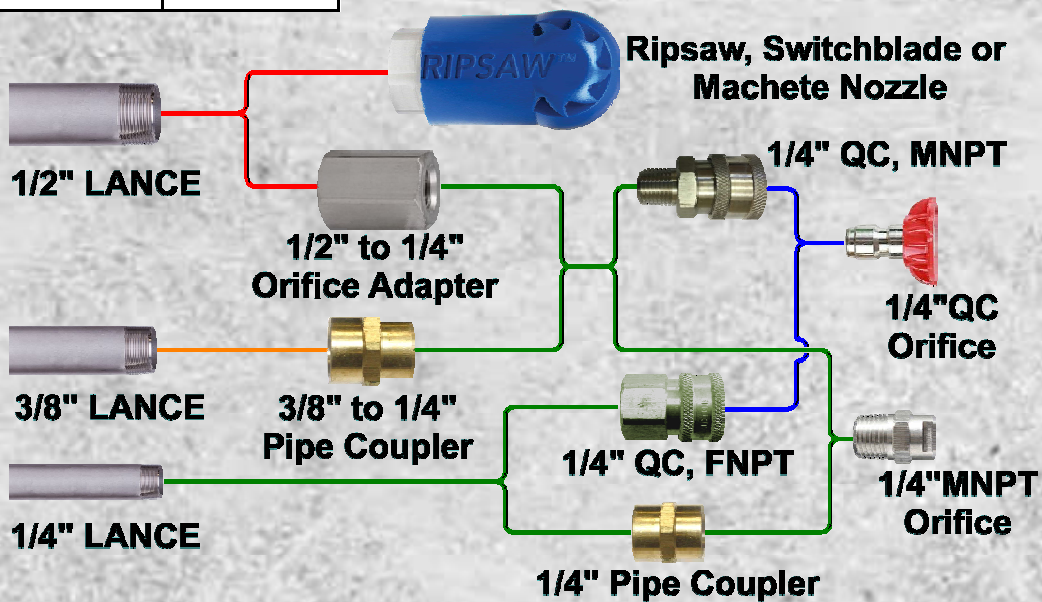


HEX PIPE COUPLERS

1/4" FNPT, 5000 PSI	C3309X4
3/8" X 1/4" FNPT, 4000 PSI	C3309X6X4
3/8" FNPT, 4000 PSI *	C3309X6
1/2" FNPT, 3000 PSI	C3309X8

#10, 0°, 1/4" QC, Red	10000413
#10, 15°, 1/4" QC, Yellow	10000414
#10, 25°, 1/4" QC, Green	10000415
#10, 40°, 1/4" QC, White	10000416

- Flow rate for a #10 (.080") orifice is about 10 GPM @ 4000 PSI.
- These QC orifices will fit quick couplers 10000408 and 10000409 on page 5 and the 121002415 Giraffe Wand on page 6.



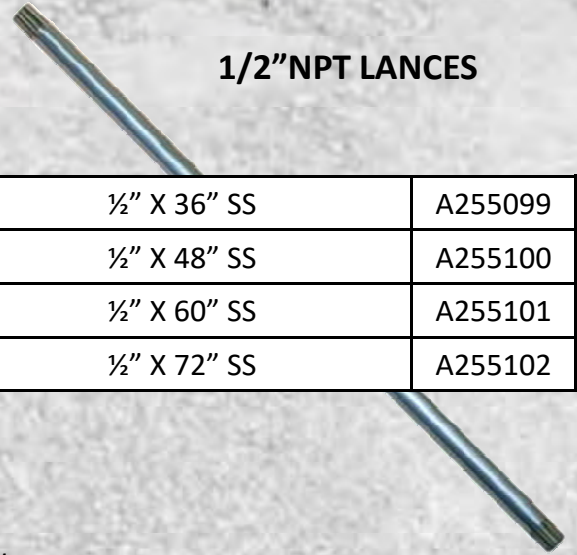


POPULAR PARTS AND ACCESSORIES



VERTICAL HYDRO EXCAVATION GUN FOR 1/2" NPT LANCES

32GPM Gun Only 1/2" NPT Inlet & Outlet 4050 PSI	A255080
---	---------



1/2" NPT LANCES

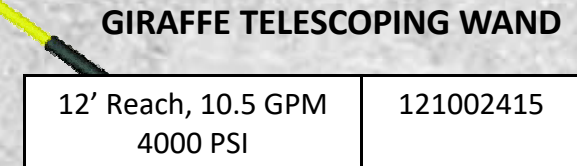
1/2" X 36" SS	A255099
1/2" X 48" SS	A255100
1/2" X 60" SS	A255101
1/2" X 72" SS	A255102



HYDRO EXCAVATION GUN FOR 1/4" NPT LANCES

10.5GPM Gun Only, 3/8" NPT Inlet, 1/4" NPT Outlet, 5000PSI	10000372
---	----------

1/4" QC Outlet
See page 7 for spray orifices.



GIRAFFE TELESCOPING WAND

12' Reach, 10.5 GPM 4000 PSI	121002415
---------------------------------	-----------

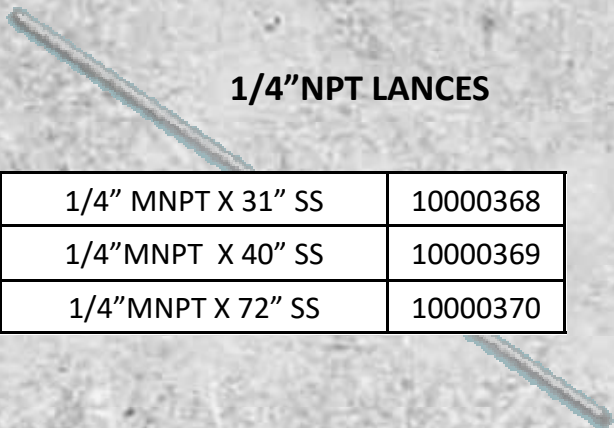
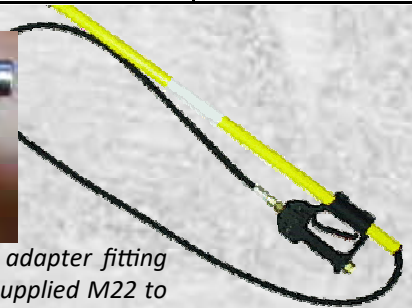


VERTICAL HYDRO EXCAVATION GUN FOR 1/4" NPT LANCES

10.5GPM Gun Only, 3/8" NPT Inlet, 1/4" NPT Outlet, 4500PSI	10000371
---	----------

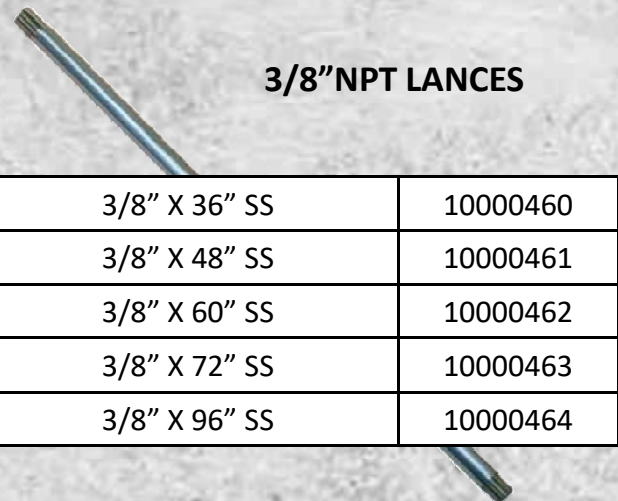


10000490
M22 to 1/2" MNPT steel adapter fitting
to eliminate the factory supplied M22 to
3/8" FNPT brass fitting.



1/4" NPT LANCES

1/4" MNPT X 31" SS	10000368
1/4" MNPT X 40" SS	10000369
1/4" MNPT X 72" SS	10000370



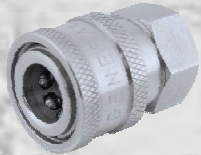
3/8" NPT LANCES

3/8" X 36" SS	10000460
3/8" X 48" SS	10000461
3/8" X 60" SS	10000462
3/8" X 72" SS	10000463
3/8" X 96" SS	10000464

STAINLESS STEEL QUICK COUPLERS



FNPT COUPLER



MNPT COUPLER

1/4" X 1/4" FNPT Coupler, 6000 PSI	10000408
1/4" X 1/4" MNPT Coupler, 6000 PSI	10000409
1/2" X 1/4" FNPT Coupler, 5000 PSI w/lock	10000367
1/2" X 1/4" MNPT Coupler, 5000 PSI w/lock	10000410
1/2" X 3/8" FNPT Coupler, 5000 PSI w/lock	10000417
1/2" X 3/8" MNPT Coupler, 5000 PSI w/lock	10000419
1/2" X 1/2" FNPT Coupler, 5000 PSI w/lock	10000420
1/2" X 1/2" MNPT Coupler, 5000 PSI w/lock	10000421

STAINLESS STEEL QC PLUGS



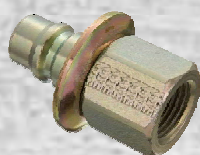
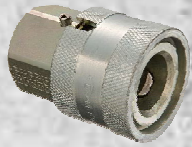
FNPT PLUG



MNPT PLUG

1/4" X 1/4" FNPT Plug, 6000 PSI	10000411
1/4" X 1/4" MNPT Plug, 6000 PSI	10000412
1/2" X 1/4" FNPT Coupler, 5000 PSI	10000422
1/2" X 1/4" MNPT Coupler, 5000 PSI	10000423
1/2" X 3/8" FNPT Coupler, 5000 PSI	10000424
1/2" X 3/8" MNPT Coupler, 5000 PSI	10000425
1/2" X 1/2" FNPT Coupler, 5000 PSI	10000426
1/2" X 1/2" MNPT Coupler, 5000 PSI	10000427

HIGH PRESSURE QUICK COUPLERS



1/2" WB Coupler, 10,000 PSI	A383062
1/2" WB Plug, 10,000 PSI	A383063

1/2" HIGH PRESSURE HOSE



25' 3500 PSI	A175065
35' 3500 PSI	A175066
50' 3500 PSI	A175069
75' 3500 PSI	A175064
100' 3500 PSI	A175075
150' 3500 PSI	A175080
200' 3500 PSI	A175085
250' 3500 PSI	A175090



HYDRO EXCAVATION WAND

21GPM Gun, 1/2" BSP Inlet/Outlet, 8100PSI, w/1/4" NPT Orifice Adapter, 51" Lance w/Side Grip	A249213
1/2" BSPM to 1/2" FNPT Adapter	A255104



POPULAR PARTS AND ACCESSORIES

2" WATER Y-STRAINER



Y-Strainer Assy.	A384053
Repl. Cap	A384053-1
Repl. Cap Gasket	A384053-2
Repl. 20 Mesh Screen	A384053-5

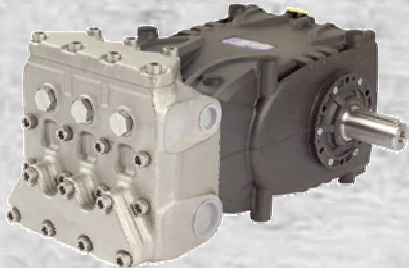
NOTE: Cap has external threads

WATER PUMPS



MODEL HF25A 19.44 GPM @ 4060 PSI @ 1000 RPM

New Pump	A381048
Plunger Repacking Kit	A383312-F2028
Suction Valve Kit	A383312-F2022 (1 Req.)
Discharge Valve Kit	A383312-F2023 (1 Req.)



MODEL KF28A 24.5 GPM @ 3045 PSI @ 1000 RPM

New Pump (RH Shaft)	121002350
New Pump (LH Shaft)	121000544
Plunger Repacking Kit	121000544-F2014
Suction Valve Kit	A216017-K2012 (1 Req.)
Discharge Valve Kit	A216017-K2013 (1 Req.)

UNLOADER VALVES



MAX GPM	MAX PSI	INLET	OUTLET	BYPASS	PART NO.
26.4	4060	¾" FNPT	¾" FNPT	¾" FNPT	22973C
29	3050	½" BSP-F	½" BSP-F	¾" BSP-F	121001627





POPULAR PARTS AND ACCESSORIES

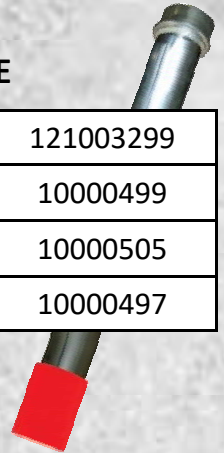
HD RINGLOCK * STYLE EXTENSION TUBES

6"OD X 3'L	10000500
6"OD X 4'L	10000501
6"OD X 5'L	10000502
6"OD X 6'L	10000503
6"OD X 7'L	10000504
8"OD X 3'L	10000477
8"OD X 4'L	10000478
8"OD X 5'L	10000479
8"OD X 6'L	10000480
8"OD X 7'L	10000481
8"OD X 8'L	10000482



HD RINGLOCK * EXCAVATOR TUBE

8"OD X 6'L	121003299
6"OD X 6'L	10000499
Replacement 6" Cuff	10000505
Replacement 8" Cuff	10000497

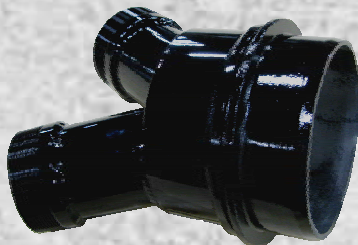


HD RINGLOCK * REDUCING ADAPTER



8" Male to 6" Female	10000453
----------------------	----------

HD RINGLOCK * REDUCING WYE ADAPTER



8" Female to two 4" MNPT	A240879-6
8" Male to two 4" MNPT	A240879-7
4" Female Camlock	10-0212
4" Male Camlock	10-0204
4" MNPT Hose Shank	02-1004-P

FEMALE HD RINGLOCK * HOSE SHANK COUPLER



6" Hose	10000475
8" Hose	10000474

HD RINGLOCK * CLAMPS



6" Tubes	U4804-0016
8" Tubes	A220425



* Compatible with Bandlock HDRL Couplers



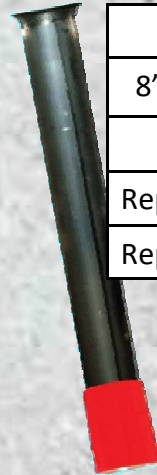
POPULAR PARTS AND ACCESSORIES

FLAT FLANGE STYLE EXTENSION TUBES



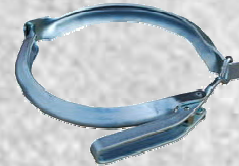
6"OD X 3'L	A249033-6
6"OD X 4'L	121003289
6"OD X 6'L	A381845-2
6"OD X 7'L	A381845-1
8"OD X 3'L	A249033
8"OD X 4'L	A249032-4
8"OD X 5'L	A249032
8"OD X 6'L	A384000
8"OD X 7'L	A249032-7
8"OD X 8'L	A249031
8"OD X 10'L	A383993

FLAT FLANGE STYLE EXTENSION TUBES



6"OD X 7'L	A255044
8"FL to 6"OD X 6'L	A255062
8"OD X 6'L	A382810-P
Replacement 6" Cuff	10000505
Replacement 8" Cuff	10000497

FLAT FLANGE QUICK CLAMPS



6" Tubes	A381850
8" Tubes	A381675

8" FLAT FLANGE REDUCING WYE ADAPTER



8" to two 4"MNPT	A240879-3
4" Female Camlock	10-0212
4" Male Camlock	10-0204
4"MNPT Hose Shank	02-1004-P

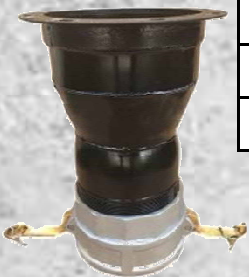


FLAT FLANGE HOSE SHANK COUPLERS



6" Flange to 6" Hose	A304687
8" Flange to 4" Hose	10000509
8" Flange to 6" Hose	10000510
8" Flange to 8" Hose	A381677

6" FLAT FLANGE REDUCING ADAPTER



6" to 4" Female Camlock	10000396
4" Male Camlock	10-0204
4"MNPT Hose Shank	02-1004-P



FLAT FLANGE REDUCING ADAPTER



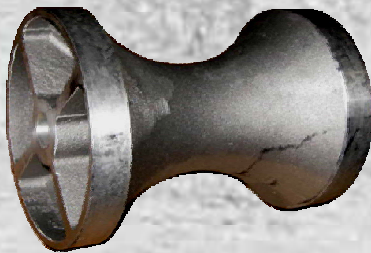
8" to 6"	A255043
6" to 4"	121002397

T-BOLT HOSE CLAMPS



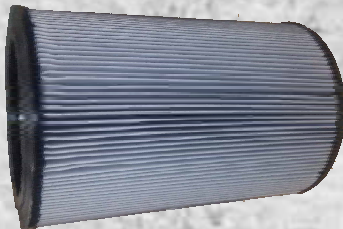
6" Hose	10-0575
8" Hose	A381225

BOOM HOSE ROLLER



6" and 8" Booms	300001180
-----------------	-----------

BLOWER INTAKE FILTER CARTRIDGE



Drum Filter	300000285
-------------	-----------

CLOSURE SEALS



8" to 10" ID Flare X 10" L	A191286
10" to 12" ID Flare X 10.25" L	U5607-0012
12" to 13.25" ID Flare X 10" L	U5607-0013

BOOM HOSES



6" ID X 16' L	A176618
6" ID X 20' L	U7000-0004
8" ID X 20' L	A176620
8" ID X 20' L HD	A176620-Y
8" ID X 24' L	A176620-24
8" ID X 24' L HD	A176642-24

BOOM HOSE TO TURRET RINGLOCK ADAPTER



Adapter for 6" Hose	A249391
6" Inlet Seal	U4805-0012
6" Ringlock Clamp	U4804-0016
Adapter for 8" Hose	A245581
8" Inlet Seal	A191804
8" Ringlock Clamp	A220425
Square Flange Gasket	300001181

RINGLOCK ADAPTER FOR TURRET END OF BOOM HOSE

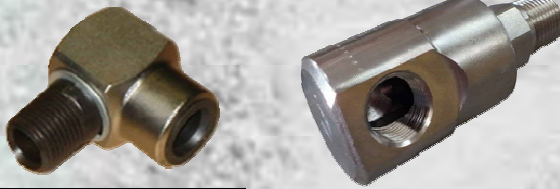


Adapter for 6" Hose	A380754
Adapter for 8" Hose	A380355



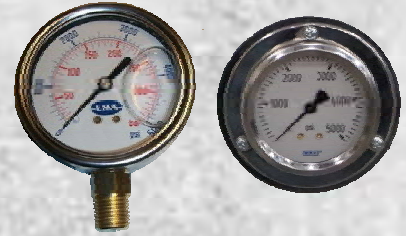
POPULAR PARTS AND ACCESSORIES

1/2" NPT HANNAY HOSE REEL SWIVELS



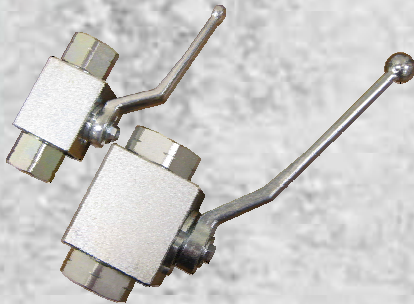
A130571-42	A130571-5-SW
3000 PSI MxF	5000 PSI MxF

WATER PRESSURE GAUGES



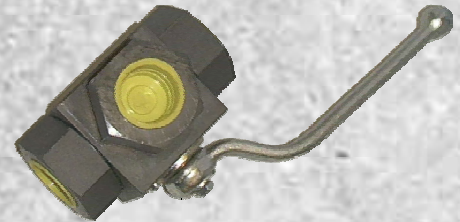
5000 PSI Pedestal Mount	A131782
5000 PSI Flange Mount	A131788

HD BALL VALVES



1/2" 7350 PSI	A304477
3/4" 6000 PSI	121005929
1" 6000 PSI	A130903

3-WAY HD BALL VALVES



1/2" 5075 PSI	A381714
3/4" 5000 PSI	A130925
1" 5000 PSI	A130920

WIRELESS REMOTE SYSTEM



Aarcomm Kit	121001268
Repl. Handheld Transmitter	121002734
Repl. Receiver	121005023
Repl. Charger Base	121002690
Repl. Transmitter Pouch	121005080
Repl. Shoulder Strap	121005081

VACUUM GAUGE



-30 to 15 hg	A131765
--------------	---------

BLOWER TEMPERATURE GAUGE



100-400°F	121004484
-----------	-----------



POPULAR PARTS AND ACCESSORIES



HOTSY RUPTURE DISK

8500 PSI	A381599-RD85
----------	--------------

HOTSY FUEL FILTER

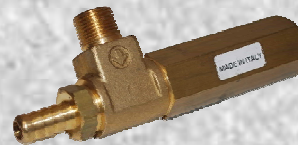


Fuel/Water Separator	A381599-1
----------------------	-----------



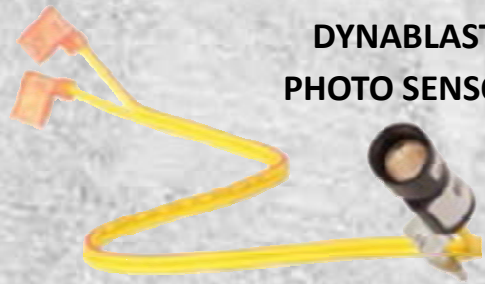
**HOTSY HIGH
LIMIT SWITCH**

Limit Switch	A381599-02
--------------	------------



**HOTSY SAFETY
RELIEF VALVE**

Safety Valve	A381599-2-SV
--------------	--------------



**DYNABLAST
PHOTO SENSOR**

Flame Detector	10000213
----------------	----------



THERMOSTATS

Hotsy	A381599-TS
Dynablast Model 420	10000222
Dynablast Model 670	10000223

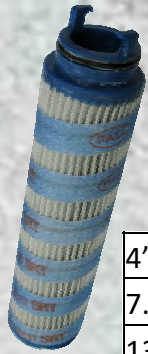


**DYNABLAST PRESSURE
RELIEF VALVE**

For Model 420	10000215
For Model 670	10000216



POPULAR PARTS AND ACCESSORIES



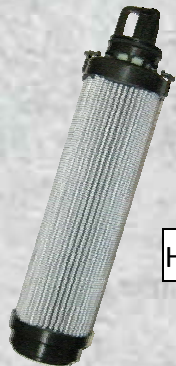
**PAL HYDRAULIC FILTER
ELEMENTS**

4" Long Medium Pressure	121004989
7.5" Long High Pressure	A383754-E
13" Long Return	121003670
20" Long Return	A384096-E



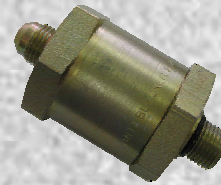
**SPIN-ON HYDRAULIC
FILTER**

Primary Supply Filter	A110516
-----------------------	---------



**PARKER HYDRAULIC
FILTER ELEMENT**

High Pressure	121005071
---------------	-----------



**"LAST CHANCE"
HYDRAULIC FILTER**

In-Line Filter for Boom Valve	A383767
-------------------------------	---------

