

Multi-pallet specials  
available, talk to your sales  
rep for more information •  
**WHILE SUPPLIES LAST!**

# JULY–AUGUST 2026 SPECIALS



**WEIR FREON -  
12 OZ CANS**  
PART #WEIR134ACANS

**\$8.85**



**CITGUARD 700  
10W30 - 1 GAL**  
PART #622722001169

**\$18.35 EA OR  
\$16.89 /PALLET**



**TECTRAN 3 IN 1  
AIRPOWER LINE - 15 FT**  
PART #TT169157PM

**\$128.00**



**TECTRAN 3 IN 1  
AIRPOWER LINE - 12 FT**  
PART #TT169127PM

**\$118.00**



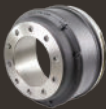
**SHELL ROTELLA ELC  
CONCENTRATE - 1 GAL**  
PART #ZSH9404106021G

**\$9.65**



**CHEVRON DELO XLE 400  
15W40 BLEND - 1 GAL**  
PART #ZJB257004GA

**\$18.00**



**SILVERBACK  
16.5X7 BRAKE DRUM**  
PART #BD3922XW

**\$96.99 EA OR  
\$92.99/PALLET**



**BLUEBIRD STEER  
AXLE DRUM**  
PART #BD123463X

**\$325.99 EA OR  
\$315.99 /PALLET**



**FLEETGUARD ES COMPLETE  
OAT 50/50 COOLANT - 1 GAL**  
PART #CC36181

**\$8.00**



**DELCO 39MT STARTER -  
MULTIPLE APPLICATIONS**  
PART #8200308

**\$397.55**



**DELCO 39MT STARTER -  
FREIGHTLINER APPLICATIONS**  
PART #8200434

**\$429.99**



**INTERNATIONAL ALTERNATOR  
- DELCO 28SI EQUIVALENT**  
PART #4024553C93

**\$215.99**



**SILVERBACK ADB22X AIR  
DISC CALIPER - DRIVER SIDE**  
PART #10AC9962X (DRIVER)

**\$610.99**



**SILVERBACK ADB22X AIR  
DISC CALIPER - PASSENGER SIDE**  
PART #10AC9961X (PASSENGER)

**\$610.99**

**FOR MORE INFORMATION, CONTACT US AT:**  
855.564.4658 | HoltTruckCenters.com

**INTERNATIONAL**  
AUTHORIZED DEALER

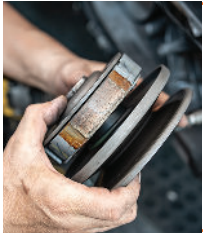
**OVER 30 CONVENIENT LOCATIONS  
IN OKLAHOMA AND TEXAS**

# 2026 SPECIALS

## FLEETRITE<sup>®</sup> SPECIALS



**\$7.00** OFF  
SELECT AIR SPRINGS



UP TO **\$10.00** OFF  
SELECT CLUTCH HARDWARE  
AND INSTALLATION KITS



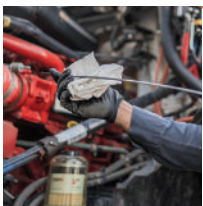
UP TO **\$15.00** OFF  
SELECT AIRLINES AND GLADHANDS



UP TO **\$25.00** OFF  
SELECT OIL



UP TO **\$25.00** OFF  
SELECT COOLANT



UP TO **\$25.00** OFF  
SELECT GEAR & TRANSMISSION FLUID

## SERVICE SPECIALS

### QUICK LUBE (43-POINT INSPECTION)

This basic service inspection includes an oil change, chassis lubrication and a review of 32 everyday operational items, such as fluids, wipers, air conditioning, brakes and instrument panel.

### "A" SERVICE (84-POINT INSPECTION)

In addition to a lube and oil change, this more advanced inspection includes a complete cab interior inspection and a total inspection outside of the vehicle to check the condition of everything from mirrors and mudflaps to the exhaust and tires. We'll also do a thorough under-vehicle inspection to check transmission levels, springs and other vital systems.

### "B" SERVICE (114-POINT INSPECTION)

This inspection includes all of the above procedures and satisfies all of the Department of Transportation annual inspection requirements. As with all of the International Preventive Maintenance inspections, only premium fluids and the best parts are used and factory-trained and certified technicians perform all maintenance.

### U.S. PRICING

SERVICE	QUICK LUBE	A SERVICE	B SERVICE
LEVEL 1	\$221.00	\$296.00	\$356.00
LEVEL 2	\$251.00	\$326.00	\$411.00
LEVEL 3	\$346.00	\$421.00	\$521.00
LEVEL 4	\$396.00	\$486.00	\$571.00
LEVEL 5	\$430.00	\$520.00	\$620.00

**NEED A LIST OF ELIGIBLE ENGINES?  
CONTACT US TODAY.**